

# **Attachment A3**

**Indicative Reference Scheme**

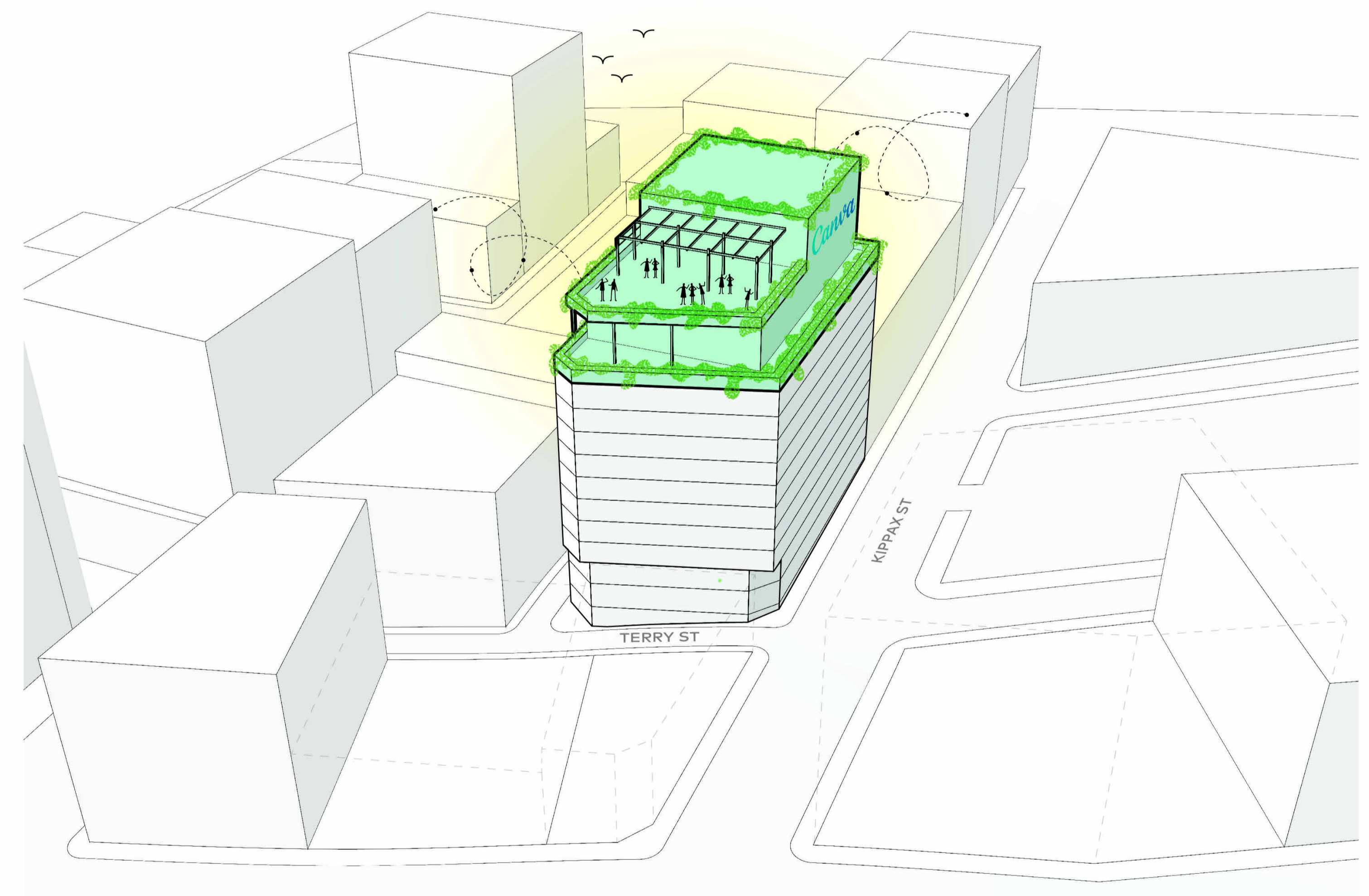
Rev	Description	By	Date
1	Issue For PP Submission	LV	06/12/2023
2	Amendments to PP Submission	LV	04/04/2024

# CANVA WORKPLACE

8-24 KIPPAX STREET, SURRY HILLS 2010, AUSTRALIA  
 22058.0

<b>PROJECT MANAGER</b> Level 13/25 Bligh St, Sydney NSW 2000	<b>GENERATE PROPERTY GROUP</b>
<b>STRUCTURAL ENGINEER</b> 488 Clarence St, Sydney NSW 2000 +61 2 959 868	<b>MEINHARDT</b>
<b>SERVICES ENGINEER</b> 33 Enkline St, Sydney NSW 2000 +61 408 679 459	<b>ADP</b>
<b>TOWN PLANNER</b> Level 4/100 George St, Sydney NSW 2000 +61 410 291 014	<b>ETHOS URBAN</b>
<b>WASTE CONSULTANT</b> Henry Lawson, Building, 408/19 Roseby St, Drummoyne +61 2 8541 6169	<b>MRA CONSULTING</b>
<b>TRAFFIC CONSULTANT</b> 10 Hesp St, Chesham NSW 2067 +61 2 9411 5660	<b>TTPA</b>
<b>FACADE ENGINEER</b> 68 York St, Sydney NSW 2000 +61 2 9269 1400	<b>SURFACE DESIGN</b>
<b>SPECIALIST FIRE ENGINEER / ESD</b> Level 11, 10 Carrington Street, Sydney, NSW, 2000 +61 547 343 458	<b>E-LAB CONSULTING</b>
<b>BCA / DDA CONSULTANT</b> Suite 302, Level 3, 151 Castlemagh Street +61 2 9411 5360	<b>JENSEN HUGHES</b>

DRAWING LIST - PLANNING PROPOSAL		
SHEET No.	SHEET NAME	Current Revision
Massing		
PP-0100	COVER SHEET - DRAWING INDEX	2
PP-1102	LOCATION PLAN	2
PP-1103	SITE PLAN	2
PP-2100	BASEMENT PLAN - ENVELOPE	2
PP-2101	LOWER GROUND PLAN - ENVELOPE	2
PP-2102	GROUND PLAN - ENVELOPE	2
PP-2103	LEVEL 1 PLAN - ENVELOPE	2
PP-2104	TYPICAL LEVEL PLAN - ENVELOPE	2
PP-2105	LEVEL 10 PLAN - ENVELOPE	2
PP-2106	LEVEL 11 PLAN - ENVELOPE	2
PP-2107	ROOF PLAN - ENVELOPE	2
PP-3100	ENVELOPE ELEVATIONS - SHEET 1	2
PP-3101	ENVELOPE ELEVATIONS - SHEET 2	2
PP-4100	ENVELOPE SECTION	2



**Cox Architecture**  
 70 George Street  
 The Rocks NSW 2000  
 Australia  
 T + 61 2 9267 9599  
 coxarchitecture.com.au

Nominated Architects:  
 Joe Agius no. 6491  
 Russell Lee no. 6367



Client: CANVA

Project No.: 22058.0

Project: CANVA

8-24 KIPPAX STREET, SURRY HILLS

**Acknowledgement**  
 In the language of the Eora Nation people, this site is known as Gadigal land.

Drawing Title: COVER SHEET - DRAWING INDEX

Document Control Status:  
 PLANNING PROPOSAL

<b>Co-ordinated:</b> LV	<b>Drawn:</b> HC
<b>Project Architect:</b> LV	<b>Scale:</b> @ A1
<b>Project Director:</b> RJ	<b>Date:</b> 04/04/2024
<b>Drawing Number:</b> PP-0100	<b>Revision:</b> 2

Rev	Description	By	Date
1	Issue For PP Submission	LV	06/12/2023
2	Amendments to PP Submission	LV	04/04/2024

<b>PROJECT MANAGER</b> Level 13/25 Bligh St, Sydney NSW 2000	<b>GENERATE PROPERTY GROUP</b>
<b>STRUCTURAL ENGINEER</b> 486 Clarence St, Sydney NSW 2000 +61 2 926 8669	<b>MEINHARDT</b>
<b>SERVICES ENGINEER</b> 33 Erskine St, Sydney NSW 2000 +61 2 428 679 459	<b>ADP</b>
<b>TOWN PLANNER</b> Level 4/100 George St, Sydney NSW 2000 +61 2 926 1420	<b>ETHOS URBAN</b>
<b>WASTE CONSULTANT</b> Henry Lawson, Building, 408/19 Roselby St, Drummoyne +61 2 8541 6169	<b>MRA CONSULTING</b>
<b>TRAFFIC CONSULTANT</b> 10 Hesp St, Chesham NSW 2067 +61 2 9411 5660	<b>TTPA</b>
<b>FACADE ENGINEER</b> 68 York St, Sydney NSW 2000 +61 2 926 1420	<b>SURFACE DESIGN</b>
<b>SPECIALIST FIRE ENGINEER / ESD</b> Level 11, 10 Carrington Street, Sydney, NSW, 2000 +61 547 343 458	<b>E-LAB CONSULTING</b>
<b>BCA / DDA CONSULTANT</b> Suite 302, Level 3, 151 Castlereagh Street +61 2 9411 5360	<b>JENSEN HUGHES</b>



**Cox Architecture**  
 70 George Street  
 The Rocks NSW 2000  
 Australia  
 T + 61 2 9267 9599  
 coxarchitecture.com.au

**Nominated Architects:**  
 Joe Agius no. 6491  
 Russell Lee no. 6367



Client **CANVA**

Project No. **22058.0**

Project **CANVA**

**8-24 KIPPAX STREET, SURRY HILLS**

**Acknowledgement**  
 In the language of the Eora Nation people, this site is known as Gadigal land.

Drawing Title **LOCATION PLAN**

Document Control Status:  
**PLANNING PROPOSAL**

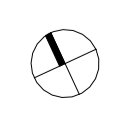
Co-ordinated: LV Drawn: HC

Project Architect: LV Scale: @ A1

Project Director: RJ Date: 15/03/2024

Drawing Number: PP-1102 Revision: 2

**1** LOCATION PLAN  
 AERIAL : NTS



Rev	Description	By	Date
1	Issue For PP Submission	LV	06/12/2023
2	Amendments to PP Submission	LV	04/04/2024

<b>PROJECT MANAGER</b> Level 13/25 Bligh St, Sydney NSW 2000	<b>GENERATE PROPERTY GROUP</b>
<b>STRUCTURAL ENGINEER</b> 486 Clarence St, Sydney NSW 2000 +61 2 959 869	<b>MEINHARDT</b>
<b>SERVICES ENGINEER</b> 33 Erskine St, Sydney NSW 2000 +61 408 679 459	<b>ADP</b>
<b>TOWN PLANNER</b> Level 4/100 George St, Sydney NSW 2000 +61 410 291 014	<b>ETHOS URBAN</b>
<b>WASTE CONSULTANT</b> Henry Lawson, Building, 408/19 Roseby St, Drummoyne +61 2 8541 6169	<b>MRA CONSULTING</b>
<b>TRAFFIC CONSULTANT</b> 10 Hesp St, Cheshamwood NSW 2067 +61 2 9411 5660	<b>TTPA</b>
<b>FACADE ENGINEER</b> 68 York St, Sydney NSW 2000 +61 2 9269 1430	<b>SURFACE DESIGN</b>
<b>SPECIALIST FIRE ENGINEER / ESD</b> Level 11, 10 Carrington Street, Sydney, NSW, 2000 +61 547 343 458	<b>E-LAB CONSULTING</b>
<b>BCA / DDA CONSULTANT</b> Suite 302, Level 3, 151 Cadzow Street +61 2 9411 5360	<b>JENSEN HUGHES</b>

**LEGEND**

- CONTEXT BUILDINGS
- COUNCIL TERRY STREET SHARED ZONE (PROPOSED)
- 8-24 KIPPAX STREET (EXISTING BUILDING)
- BOUNDARY LINE

**Cox Architecture**  
70 George Street  
The Rocks NSW 2000  
Australia  
T + 61 2 9267 9599  
coxarchitecture.com.au

**Nominated Architects:**  
Joe Agius no. 6491  
Russell Lee no. 6367



Client: CANVA

Project No.: 22058.0

Project: CANVA

8-24 KIPPAX STREET, SURRY HILLS

**Acknowledgement**  
In the language of the Eora Nation people, this site is known as Gadigal land.

Drawing Title: SITE PLAN

Document Control Status:  
PLANNING PROPOSAL

Co-ordinated: LV  
Drawn: HC

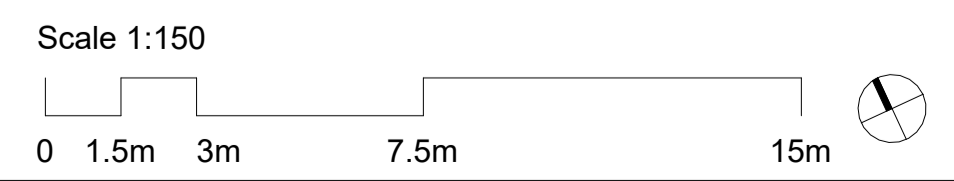
Project Architect: LV  
Scale: As indicated @ A1

Project Director: RJ  
Date: 04/04/2024

Drawing Number: PP-1103  
Revision: 2



**1 SITE PLAN**  
SCALE 1 : 150



Rev	Description	By	Date
1	Issue For PP Submission	LV	06/12/2023
2	Amendments to PP Submission	LV	04/04/2024

**PROJECT MANAGER** GENERATE PROPERTY GROUP  
 Level 13/25 Bligh St, Sydney NSW 2000

**STRUCTURAL ENGINEER** MEINHARDT  
 488 Clarence St, Sydney NSW 2000  
 +61 2 959 969

**SERVICES ENGINEER** ADP  
 33 Erskine St, Sydney NSW 2000  
 +61 2 428 679 459

**TOWN PLANNER** ETHOS URBAN  
 Level 4/100 George St, Sydney NSW 2000  
 +61 410 291 014

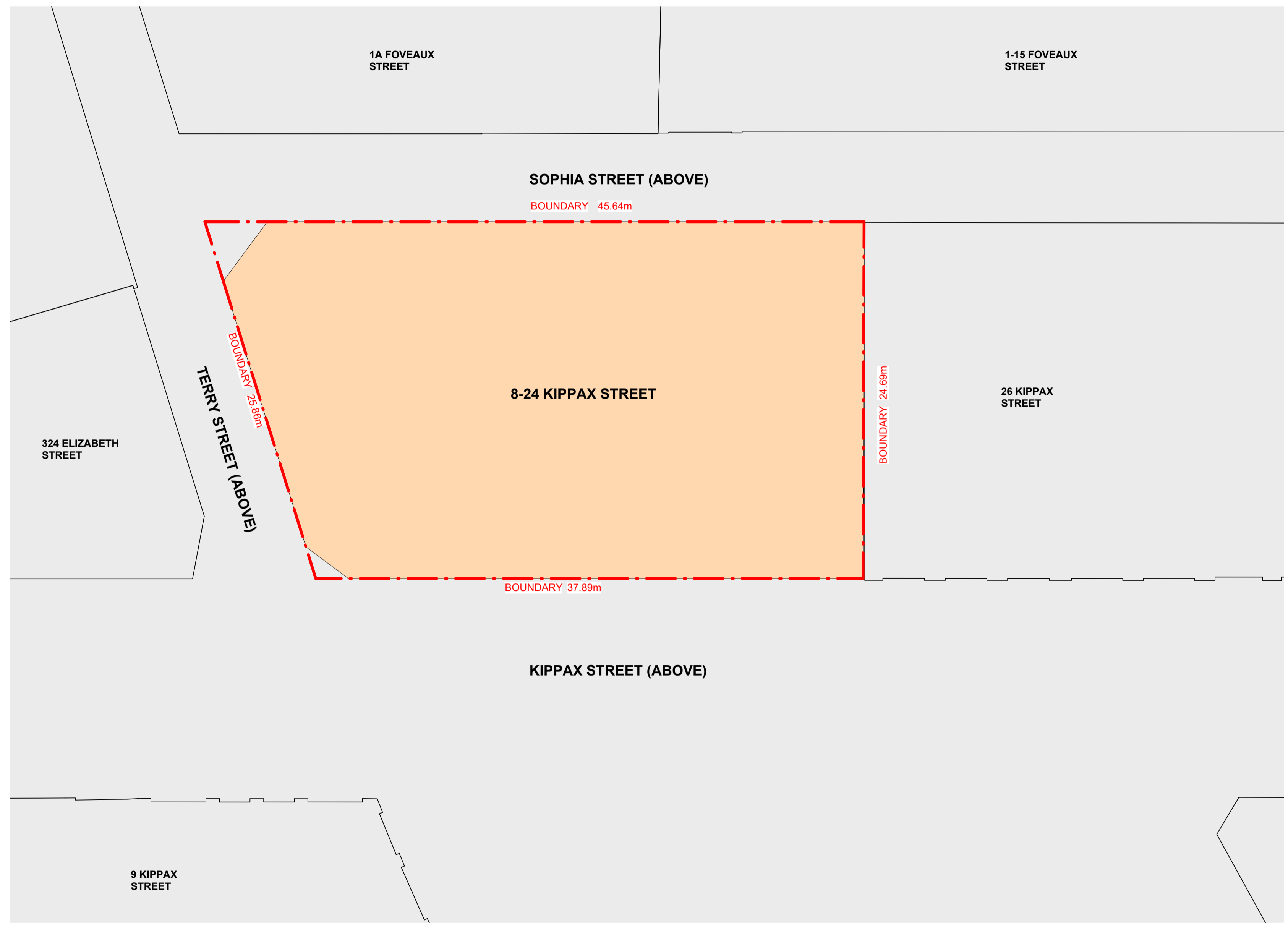
**WASTE CONSULTANT** MRA CONSULTING  
 Henry Lawson, Building, 408/19 Roseby St, Drummoyne  
 +61 2 8541 6169

**TRAFFIC CONSULTANT** TTPA  
 10 West St, Chesham NSW 2367  
 +61 2 9411 5660

**FACADE ENGINEER** SURFACE DESIGN  
 68 York St, Sydney NSW 2000  
 +61 2 9269 1430

**SPECIALIST FIRE ENGINEER / ESD** E-LAB CONSULTING  
 Level 11, 10 Carrington Street, Sydney, NSW, 2000  
 +61 547 343 458

**BCA / DDA CONSULTANT** JENSEN HUGHES  
 Suite 302, Level 3, 151 Castlereagh Street  
 +61 2 9411 5360



**LEGEND**

- CONTEXT BUILDINGS
- 8-24 KIPPAX STREET (EXISTING BUILDING)
- 8-24 KIPPAX STREET (EXTENSION)
- LEVEL 11 TERRACE
- LANDSCAPING / GREEN ROOF
- BOUNDARY LINE

**Cox Architecture**  
 70 George Street  
 The Rocks NSW 2000  
 Australia  
 T + 61 2 9267 9599  
 coxarchitecture.com.au

**Nominated Architects:**  
 Joe Agius no. 6491  
 Russell Lee no. 6367



**Client** CANVA

**Project No.** 22058.0

**Project** CANVA

**8-24 KIPPAX STREET, SURRY HILLS**

**Acknowledgement**  
 In the language of the Eora Nation people, this site is known as Gadigal land.

**Drawing Title** BASEMENT PLAN - ENVELOPE

**Document Control Status:** PLANNING PROPOSAL

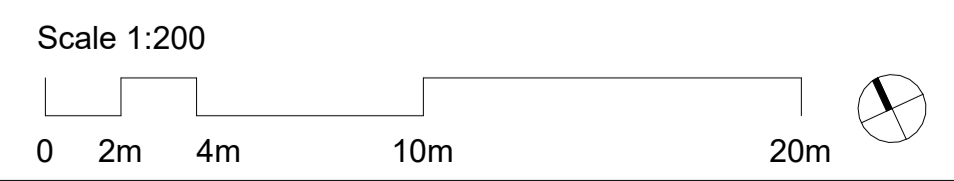
**Co-ordinated:** LV **Drawn:** HC

**Project Architect:** LV **Scale:** As indicated @ A1

**Project Director:** RJ **Date:** 04/04/2024

**Drawing Number:** PP-2100 **Revision:** 2

**1 BASEMENT PLAN - ENVELOPE**  
 SCALE 1 : 200



Rev	Description	By	Date
1	Issue For PP Submission	LV	06/12/2023
2	Amendments to PP Submission	LV	04/04/2024

**PROJECT MANAGER** GENERATE PROPERTY GROUP  
 Level 13/25 Bligh St, Sydney NSW 2000

**STRUCTURAL ENGINEER** MEINHARDT  
 488 Clarence St, Sydney NSW 2000  
 +61 2 959 869

**SERVICES ENGINEER** ADP  
 33 Erskine St, Sydney NSW 2000  
 +61 428 679 459

**TOWN PLANNER** ETHOS URBAN  
 Level 4/100 George St, Sydney NSW 2000  
 +61 410 291 014

**WASTE CONSULTANT** MRA CONSULTING  
 Henry Lawson, Building, 408/19 Roseby St, Drummoyne  
 +61 2 8541 6169

**TRAFFIC CONSULTANT** TTPA  
 10 West St, Chesham NSW 2367  
 +61 2 9411 5660

**FACADE ENGINEER** SURFACE DESIGN  
 68 York St, Sydney NSW 2000  
 +61 2 9269 1430

**SPECIALIST FIRE ENGINEER / ESD** E-LAB CONSULTING  
 Level 11, 10 Carrington Street, Sydney, NSW, 2000  
 +61 547 343 458

**BCA / DDA CONSULTANT** JENSEN HUGHES  
 Suite 302, Level 3, 151 Cadellagh Street  
 +61 2 9411 5360

**LEGEND**

- CONTEXT BUILDINGS
- 8-24 KIPPAX STREET (EXISTING BUILDING)
- 8-24 KIPPAX STREET (EXTENSION)
- LEVEL 11 TERRACE
- LANDSCAPING / GREEN ROOF
- BOUNDARY LINE

**Cox Architecture**  
 70 George Street  
 The Rocks NSW 2000  
 Australia  
 T + 61 2 9267 9599  
 coxarchitecture.com.au

**Nominated Architects:**  
 Joe Agius no. 6491  
 Russell Lee no. 6367



**Client** CANVA

**Project No.** 22058.0

**Project** CANVA

**8-24 KIPPAX STREET, SURRY HILLS**

**Acknowledgement**  
 In the language of the Eora Nation people, this site is known as Gadigal land.

**Drawing Title**  
 LOWER GROUND PLAN - ENVELOPE

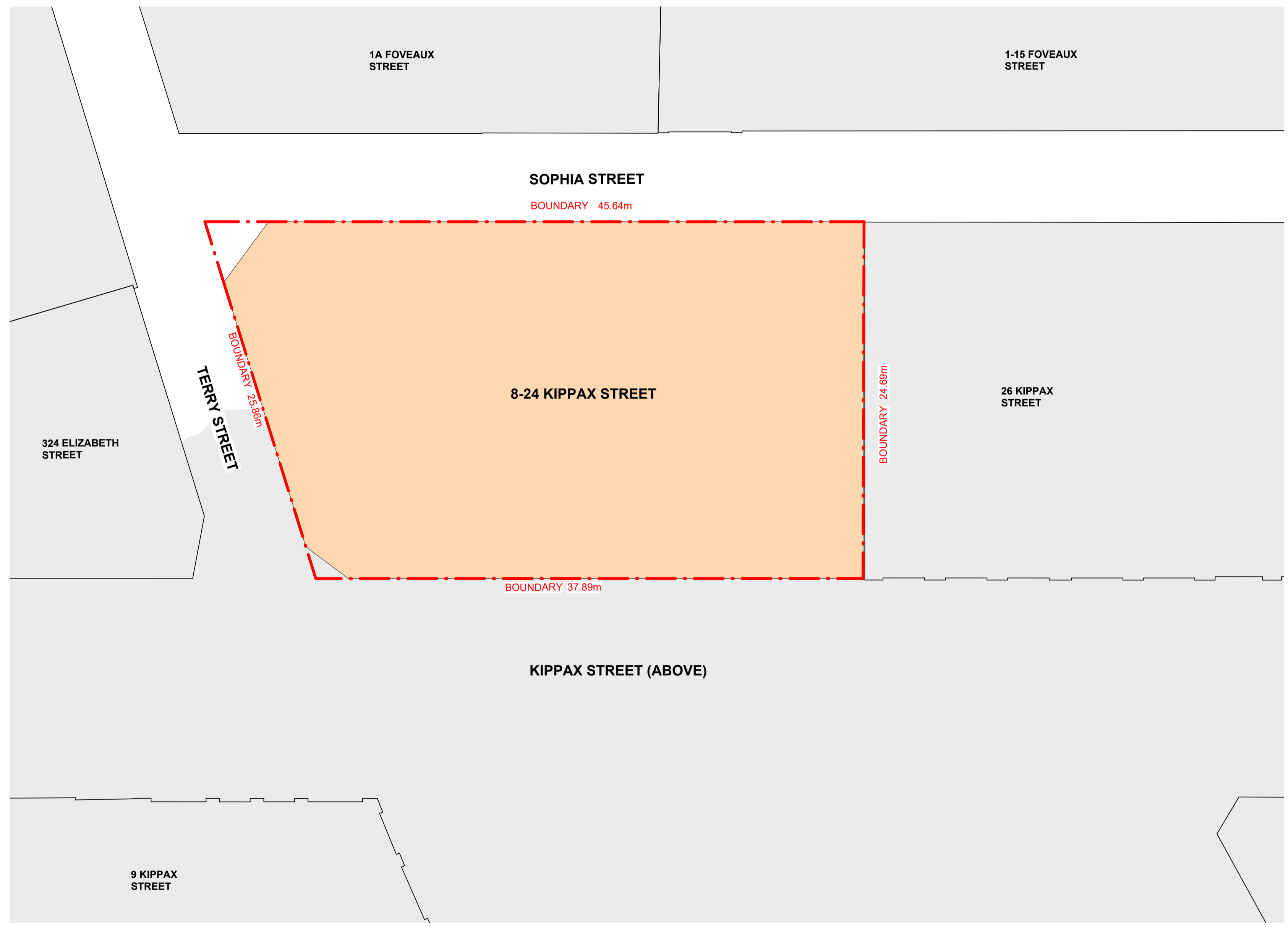
**Document Control Status:**  
 PLANNING PROPOSAL

**Co-ordinated:** LV **Drawn:** HC

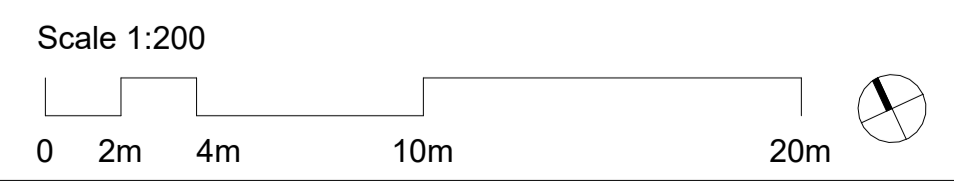
**Project Architect:** LV **Scale:** As indicated @ A1

**Project Director:** RJ **Date:** 04/04/2024

**Drawing Number:** PP-2101 **Revision:** 2



**1 LOWER GROUND PLAN - ENVELOPE**  
 SCALE 1:200



Rev	Description	By	Date
1	Issue For PP Submission	LV	06/12/2023
2	Amendments to PP Submission	LV	04/04/2024

<b>PROJECT MANAGER</b> Level 13/25 Bligh St, Sydney NSW 2000	<b>GENERATE PROPERTY GROUP</b>
<b>STRUCTURAL ENGINEER</b> 488 Clarence St, Sydney NSW 2000 +61 2 959 869	<b>MEINHARDT</b>
<b>SERVICES ENGINEER</b> 33 Erskine St, Sydney NSW 2000 +61 428 679 459	<b>ADP</b>
<b>TOWN PLANNER</b> Level 4/100 George St, Sydney NSW 2000 +61 410 291 014	<b>ETHOS URBAN</b>
<b>WASTE CONSULTANT</b> Henry Lawson, Building, 408/19 Roseby St, Drummoyne +61 2 8541 6169	<b>MRA CONSULTING</b>
<b>TRAFFIC CONSULTANT</b> 10 West St, Chesham NSW 2367 +61 2 9411 5660	<b>TTPA</b>
<b>FACADE ENGINEER</b> 68 York St, Sydney NSW 2000 +61 2 9269 1430	<b>SURFACE DESIGN</b>
<b>SPECIALIST FIRE ENGINEER / ESD</b> Level 11, 10 Carrington Street, Sydney, NSW, 2000 +61 547 343 458	<b>E-LAB CONSULTING</b>
<b>BCA / DDA CONSULTANT</b> Suite 302, Level 3, 151 Cadzow Street +61 2 9411 5360	<b>JENSEN HUGHES</b>



**LEGEND**

- CONTEXT BUILDINGS
- 8-24 KIPPAX STREET (EXISTING BUILDING)
- 8-24 KIPPAX STREET (EXTENSION)
- LEVEL 11 TERRACE
- LANDSCAPING / GREEN ROOF
- BOUNDARY LINE

**Cox Architecture**  
 70 George Street  
 The Rocks NSW 2000  
 Australia  
 T + 61 2 9267 9599  
 coxarchitecture.com.au

**Nominated Architects:**  
 Joe Agius no. 6491  
 Russell Lee no. 6367



<b>Client</b>	CANVA
<b>Project No.</b>	22058.0
<b>Project</b>	CANVA
<b>8-24 KIPPAX STREET, SURRY HILLS</b>	

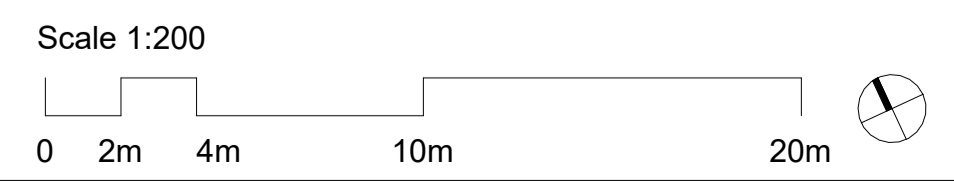
**Acknowledgement**  
 In the language of the Eora Nation people, this site is known as Gadigal land.

**Drawing Title**  
 GROUND PLAN - ENVELOPE

**Document Control Status:**  
 PLANNING PROPOSAL

<b>Co-ordinated:</b> LV	<b>Drawn:</b> HC
<b>Project Architect:</b> LV	<b>Scale:</b> As indicated @ A1
<b>Project Director:</b> RJ	<b>Date:</b> 04/04/2024
<b>Drawing Number:</b> PP-2102	<b>Revision:</b> 2

**1 GROUND LEVEL PLAN - ENVELOPE**  
 SCALE 1 : 200



Rev	Description	By	Date
1	Issue For PP Submission	LV	06/12/2023
2	Amendments to PP Submission	LV	04/04/2024

<b>PROJECT MANAGER</b> Level 13/25 Bligh St, Sydney NSW 2000	<b>GENERATE PROPERTY GROUP</b>
<b>STRUCTURAL ENGINEER</b> 488 Clarence St, Sydney NSW 2000 +61 2 959 869	<b>MEINHARDT</b>
<b>SERVICES ENGINEER</b> 33 Erskine St, Sydney NSW 2000 +61 2 428 679 459	<b>ADP</b>
<b>TOWN PLANNER</b> Level 4/100 George St, Sydney NSW 2000 +61 410 291 014	<b>ETHOS URBAN</b>
<b>WASTE CONSULTANT</b> Henry Lawson, Building, 408/19 Roseby St, Drummoyne +61 2 8541 6169	<b>MRA CONSULTING</b>
<b>TRAFFIC CONSULTANT</b> 10 West St, Chesham NSW 2367 +61 2 9411 5660	<b>TTPA</b>
<b>FACADE ENGINEER</b> 68 York St, Sydney NSW 2000 +61 2 9269 1430	<b>SURFACE DESIGN</b>
<b>SPECIALIST FIRE ENGINEER / ESD</b> Level 11, 10 Carrington Street, Sydney, NSW, 2000 +61 547 343 458	<b>E-LAB CONSULTING</b>
<b>BCA / DDA CONSULTANT</b> Suite 302, Level 3, 151 Castlereagh Street +61 2 9411 5360	<b>JENSEN HUGHES</b>



**LEGEND**

- CONTEXT BUILDINGS
- 8-24 KIPPAX STREET (EXISTING BUILDING)
- 8-24 KIPPAX STREET (EXTENSION)
- LEVEL 11 TERRACE
- LANDSCAPING / GREEN ROOF
- BOUNDARY LINE

**Cox Architecture**  
 70 George Street  
 The Rocks NSW 2000  
 Australia  
 T + 61 2 9267 9599  
 coxarchitecture.com.au

Nominated Architects:  
 Joe Agius no. 6491  
 Russell Lee no. 6367



Client	CANVA
Project No.	22058.0
Project	CANVA
<b>8-24 KIPPAX STREET, SURRY HILLS</b>	

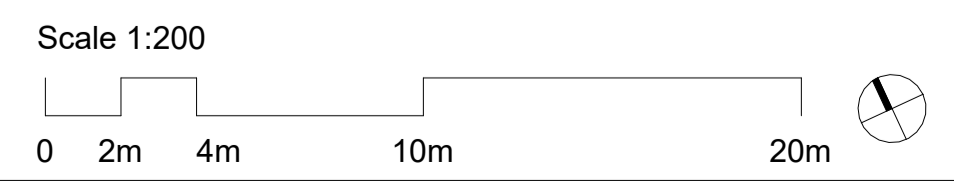
**Acknowledgement**  
 In the language of the Eora Nation people, this site is known as Gadigal land.

**Drawing Title**  
 LEVEL 1 PLAN - ENVELOPE

**Document Control Status:**  
 PLANNING PROPOSAL

<b>Co-ordinated:</b> LV	<b>Drawn:</b> HC
<b>Project Architect:</b> LV	<b>Scale:</b> As indicated @ A1
<b>Project Director:</b> RJ	<b>Date:</b> 04/04/2024
<b>Drawing Number:</b> PP-2103	<b>Revision:</b> 2

**1 LEVEL 01 PLAN - ENVELOPE**  
 SCALE 1 : 200





Rev	Description	By	Date
1	Issue For PP Submission	LV	06/12/2023
2	Amendments to PP Submission	LV	04/04/2024

<b>PROJECT MANAGER</b> Level 13/25 Bligh St, Sydney NSW 2000	<b>GENERATE PROPERTY GROUP</b>
<b>STRUCTURAL ENGINEER</b> 486 Clarence St, Sydney NSW 2000 +61 2 959 969	<b>MEINHARDT</b>
<b>SERVICES ENGINEER</b> 33 Erskine St, Sydney NSW 2000 +61 408 679 459	<b>ADP</b>
<b>TOWN PLANNER</b> Level 4/100 George St, Sydney NSW 2000 +61 410 291 014	<b>ETHOS URBAN</b>
<b>WASTE CONSULTANT</b> Henry Lawson, Building, 408/19 Rosaby St, Drummoyne +61 2 8541 6169	<b>MRA CONSULTING</b>
<b>TRAFFIC CONSULTANT</b> 10 West St, Chesham NSW 2367 +61 2 9411 5660	<b>TTPA</b>
<b>FACADE ENGINEER</b> 68 York St, Sydney NSW 2000 +61 2 9269 1400	<b>SURFACE DESIGN</b>
<b>SPECIALIST FIRE ENGINEER / ESD</b> Level 11, 10 Carrington Street, Sydney, NSW, 2000 +61 547 343 458	<b>E-LAB CONSULTING</b>
<b>BCA / DDA CONSULTANT</b> Suite 302, Level 3, 151 Cadzow Street +61 2 9411 5360	<b>JENSEN HUGHES</b>

**LEGEND**

- CONTEXT BUILDINGS
- 8-24 KIPPAX STREET (EXISTING BUILDING)
- 8-24 KIPPAX STREET (EXTENSION)
- LEVEL 11 TERRACE
- LANDSCAPING / GREEN ROOF
- BOUNDARY LINE

**Cox Architecture**  
70 George Street  
The Rocks NSW 2000  
Australia  
T + 61 2 9267 9599  
coxarchitecture.com.au

**Nominated Architects:**  
Joe Agius no. 6491  
Russell Lee no. 6367



<b>Client</b>	CANVA
<b>Project No.</b>	22058.0
<b>Project</b>	CANVA
<b>8-24 KIPPAX STREET, SURRY HILLS</b>	

**Acknowledgement**  
In the language of the Eora Nation people, this site is known as Gadigal land.

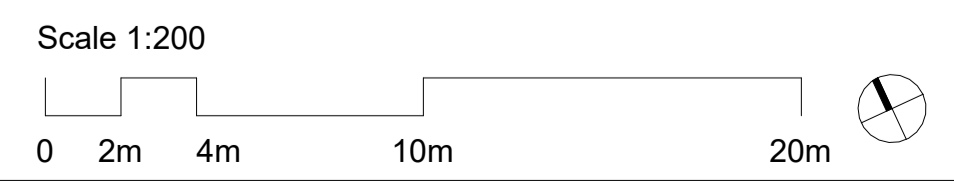
**Drawing Title**  
TYPICAL LEVEL PLAN - ENVELOPE

**Document Control Status:**  
PLANNING PROPOSAL

<b>Co-ordinated:</b> LV	<b>Drawn:</b> HC
<b>Project Architect:</b> LV	<b>Scale:</b> As indicated @ A1
<b>Project Director:</b> RJ	<b>Date:</b> 04/04/2024
<b>Drawing Number:</b> PP-2104	<b>Revision:</b> 2






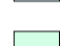


**1 TYPICAL LEVEL PLAN - ENVELOPE**  
SCALE 1 : 200



Rev	Description	By	Date
1	Issue For PP Submission	LV	06/12/2023
2	Amendments to PP Submission	LV	04/04/2024

<b>PROJECT MANAGER</b> Level 13/25 Bligh St, Sydney NSW 2000	<b>GENERATE PROPERTY GROUP</b>
<b>STRUCTURAL ENGINEER</b> 488 Clarence St, Sydney NSW 2000 +61 2 959 969	<b>MEINHARDT</b>
<b>SERVICES ENGINEER</b> 33 Erskine St, Sydney NSW 2000 +61 428 679 459	<b>ADP</b>
<b>TOWN PLANNER</b> Level 4/100 George St, Sydney NSW 2000 +61 410 291 014	<b>ETHOS URBAN</b>
<b>WASTE CONSULTANT</b> Henry Lawson, Building, 408/19 Roseby St, Drummoyne +61 2 8541 6169	<b>MRA CONSULTING</b>
<b>TRAFFIC CONSULTANT</b> 10 West St, Chesham NSW 2367 +61 2 9411 5660	<b>TTPA</b>
<b>FACADE ENGINEER</b> 68 York St, Sydney NSW 2000 +61 2 9269 1430	<b>SURFACE DESIGN</b>
<b>SPECIALIST FIRE ENGINEER / ESD</b> Level 11, 10 Carrington Street, Sydney, NSW, 2000 +61 547 343 458	<b>E-LAB CONSULTING</b>
<b>BCA / DDA CONSULTANT</b> Suite 302, Level 3, 151 Castlereagh Street +61 2 9411 5360	<b>JENSEN HUGHES</b>

**LEGEND**

-  CONTEXT BUILDINGS
-  8-24 KIPPAX STREET (EXISTING BUILDING)
-  8-24 KIPPAX STREET (EXTENSION)
-  LEVEL 11 TERRACE
-  LANDSCAPING / GREEN ROOF
-  BOUNDARY LINE

**Cox Architecture**  
70 George Street  
The Rocks NSW 2000  
Australia  
T + 61 2 9267 9599  
coxarchitecture.com.au

Nominated Architects:  
Joe Agius no. 6491  
Russell Lee no. 6367



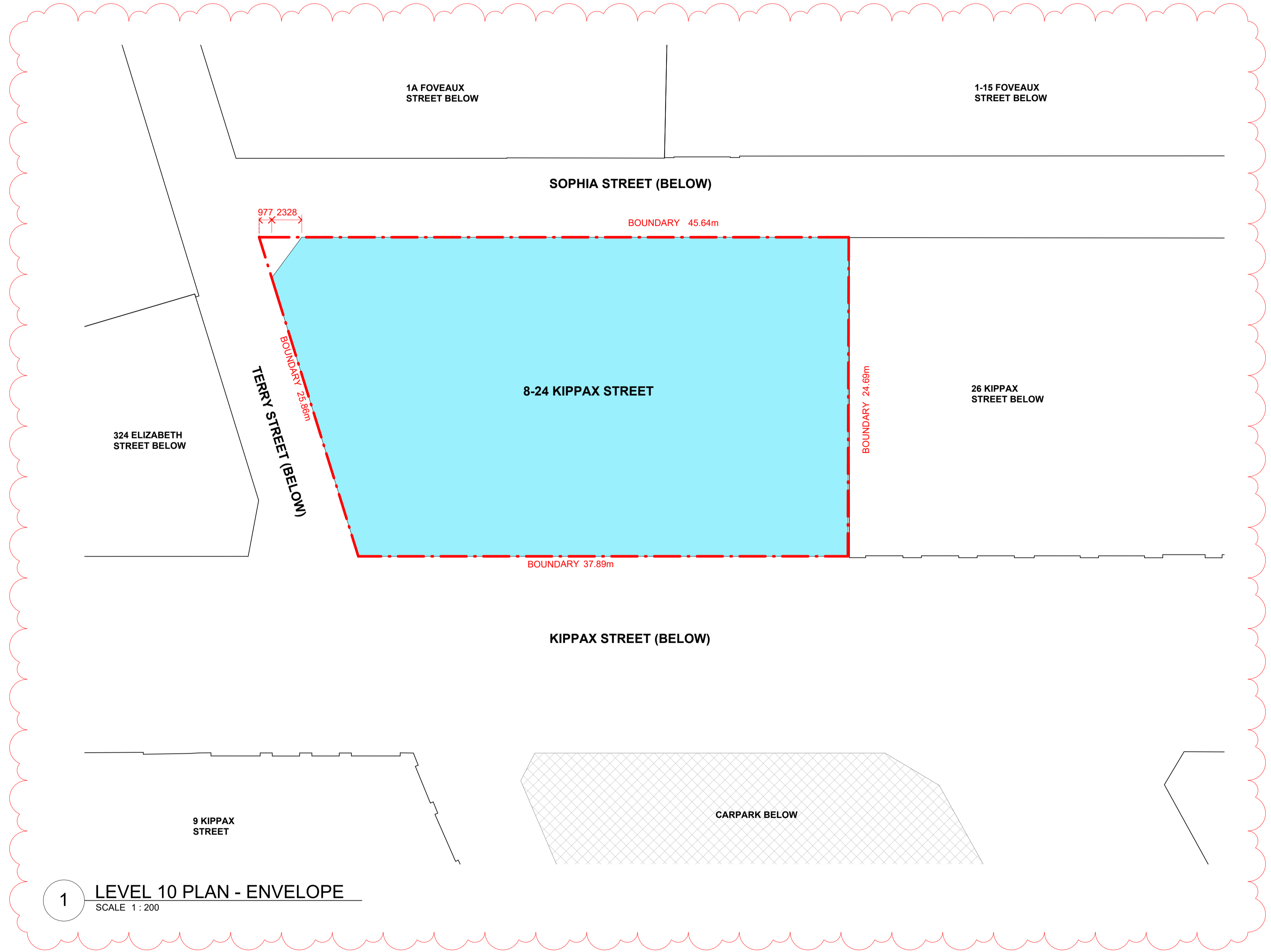
<b>Client</b>	CANVA
<b>Project No.</b>	22058.0
<b>Project</b>	CANVA
<b>8-24 KIPPAX STREET, SURRY HILLS</b>	

**Acknowledgement**  
In the language of the Eora Nation people, this site is known as Gadigal land.

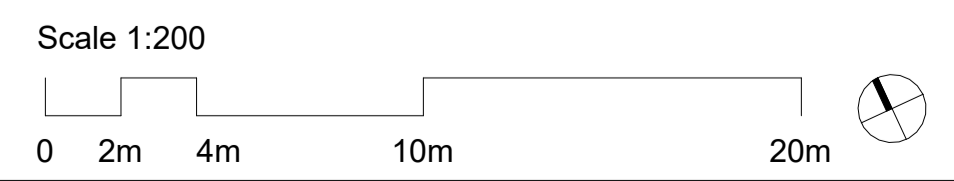
**Drawing Title**  
LEVEL 10 PLAN - ENVELOPE

**Document Control Status:**  
PLANNING PROPOSAL

<b>Co-ordinated:</b> LV	<b>Drawn:</b> HC
<b>Project Architect:</b> LV	<b>Scale:</b> As indicated @ A1
<b>Project Director:</b> RJ	<b>Date:</b> 04/04/2024
<b>Drawing Number:</b> PP-2105	<b>Revision:</b> 2



**1 LEVEL 10 PLAN - ENVELOPE**  
SCALE 1 : 200



Rev	Description	By	Date
1	Issue For PP Submission	LV	06/12/2023
2	Amendments to PP Submission	LV	04/04/2024

<b>PROJECT MANAGER</b> Level 13/25 Bligh St, Sydney NSW 2000	<b>GENERATE PROPERTY GROUP</b>
<b>STRUCTURAL ENGINEER</b> 488 Clarence St, Sydney NSW 2000 +61 2 959 869	<b>MEINHARDT</b>
<b>SERVICES ENGINEER</b> 33 Enkline St, Sydney NSW 2000 +61 428 679 459	<b>ADP</b>
<b>TOWN PLANNER</b> Level 4/180 George St, Sydney NSW 2000 +61 410 291 014	<b>ETHOS URBAN</b>
<b>WASTE CONSULTANT</b> Henry Lawson, Building, 408/19 Roseby St, Drummoyne +61 2 8541 6169	<b>MRA CONSULTING</b>
<b>TRAFFIC CONSULTANT</b> 10 West St, Chesham NSW 2067 +61 2 9411 5660	<b>TTPA</b>
<b>FACADE ENGINEER</b> 68 York St, Sydney NSW 2000 +61 2 9269 1400	<b>SURFACE DESIGN</b>
<b>SPECIALIST FIRE ENGINEER / ESD</b> Level 11, 10 Carrington Street, Sydney, NSW, 2000 +61 547 343 458	<b>E-LAB CONSULTING</b>
<b>BCA / DDA CONSULTANT</b> Suite 302, Level 3, 151 Castlereagh Street +61 2 9411 5360	<b>JENSEN HUGHES</b>

**LEGEND**

- CONTEXT BUILDINGS
- 8-24 KIPPAX STREET (EXISTING BUILDING)
- 8-24 KIPPAX STREET (EXTENSION)
- LEVEL 11 TERRACE
- LANDSCAPING / GREEN ROOF
- BOUNDARY LINE

**Cox Architecture**  
70 George Street  
The Rocks NSW 2000  
Australia  
T + 61 2 9267 9599  
coxarchitecture.com.au

Nominated Architects:  
Joe Agius no. 6491  
Russell Lee no. 6367



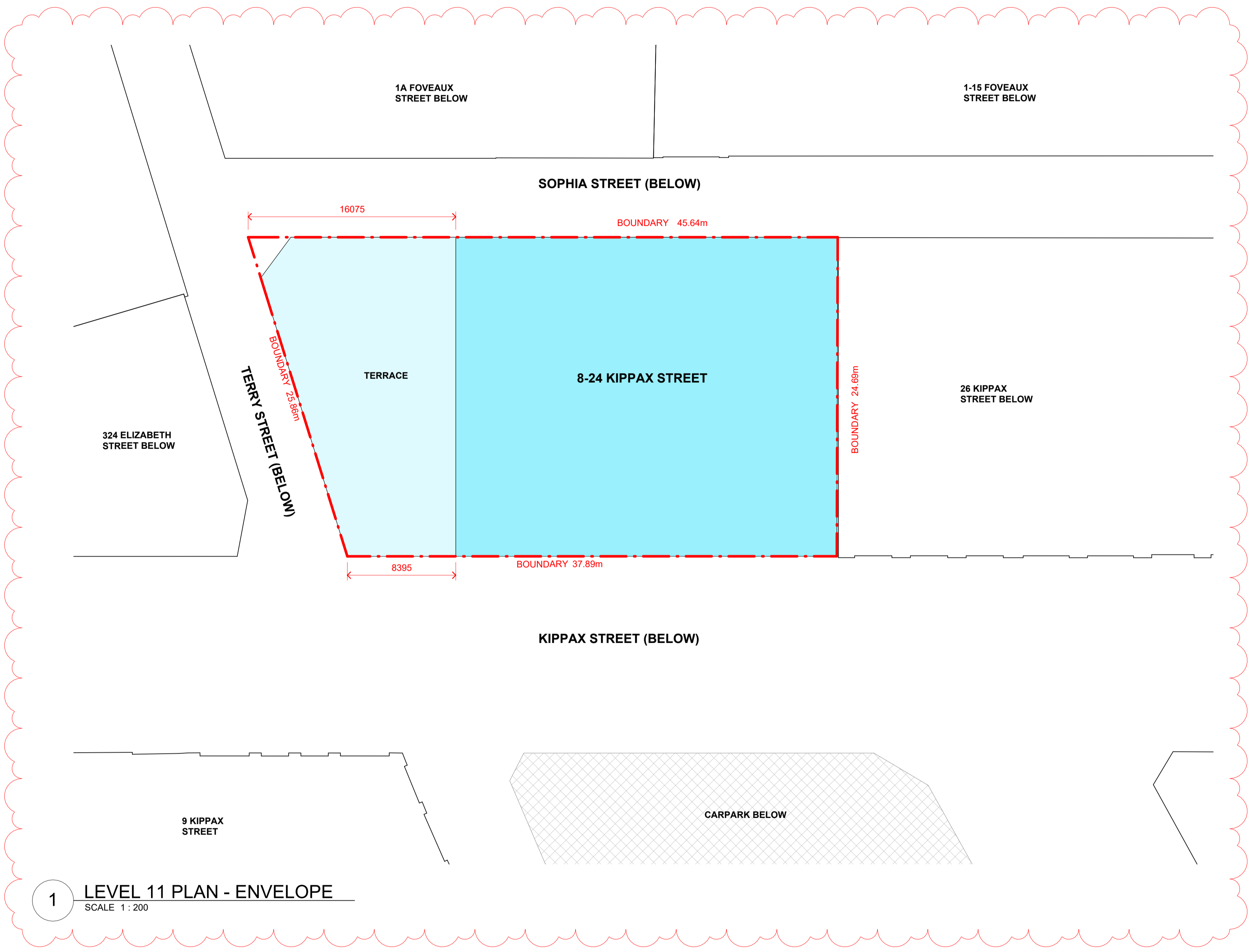
Client	CANVA
Project No.	22058.0
Project	CANVA
<b>8-24 KIPPAX STREET, SURRY HILLS</b>	

**Acknowledgement**  
In the language of the Eora Nation people, this site is known as Gadigal land.

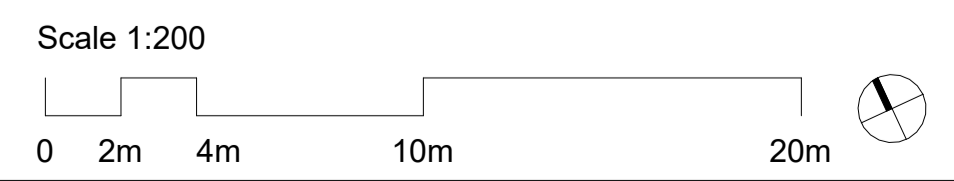
**Drawing Title**  
LEVEL 11 PLAN - ENVELOPE

**Document Control Status:**  
PLANNING PROPOSAL

<b>Co-ordinated:</b> LV	<b>Drawn:</b> HC
<b>Project Architect:</b> LV	<b>Scale:</b> As indicated @ A1
<b>Project Director:</b> RJ	<b>Date:</b> 04/04/2024
<b>Drawing Number:</b> PP-2106	<b>Revision:</b> 2




**1 LEVEL 11 PLAN - ENVELOPE**  
SCALE 1 : 200



Rev	Description	By	Date
1	Issue For PP Submission	LV	06/12/2023
2	Amendments to PP Submission	LV	04/04/2024

<b>PROJECT MANAGER</b> Level 13/25 Bligh St, Sydney NSW 2000	<b>GENERATE PROPERTY GROUP</b>
<b>STRUCTURAL ENGINEER</b> 488 Clarence St, Sydney NSW 2000 +61 2 959 869	<b>MEINHARDT</b>
<b>SERVICES ENGINEER</b> 33 Erskine St, Sydney NSW 2000 +61 408 679 459	<b>ADP</b>
<b>TOWN PLANNER</b> Level 4/100 George St, Sydney NSW 2000 +61 410 291 014	<b>ETHOS URBAN</b>
<b>WASTE CONSULTANT</b> Henry Lawson, Building, 408/19 Rosaby St, Drummoyne +61 2 8541 6169	<b>MRA CONSULTING</b>
<b>TRAFFIC CONSULTANT</b> 10 West St, Chesham NSW 2067 +61 2 9411 5660	<b>TTPA</b>
<b>FACADE ENGINEER</b> 68 York St, Sydney NSW 2000 +61 2 9269 1400	<b>SURFACE DESIGN</b>
<b>SPECIALIST FIRE ENGINEER / ESD</b> Level 11, 10 Carrington Street, Sydney, NSW, 2000 +61 547 343 458	<b>E-LAB CONSULTING</b>
<b>BCA / DDA CONSULTANT</b> Suite 302, Level 3, 151 Castlereagh Street +61 2 9411 5360	<b>JENSEN HUGHES</b>

**LEGEND**

-  CONTEXT BUILDINGS
-  8-24 KIPPAX STREET (EXISTING BUILDING)
-  8-24 KIPPAX STREET (EXTENSION)
-  LEVEL 11 TERRACE
-  LANDSCAPING / GREEN ROOF
-  BOUNDARY LINE

**Cox Architecture**  
 70 George Street  
 The Rocks NSW 2000  
 Australia  
 T + 61 2 9267 9599  
 coxarchitecture.com.au

Nominated Architects:  
 Joe Agius no. 6491  
 Russell Lee no. 6367



<b>Client</b>	CANVA
<b>Project No.</b>	22058.0
<b>Project</b>	CANVA

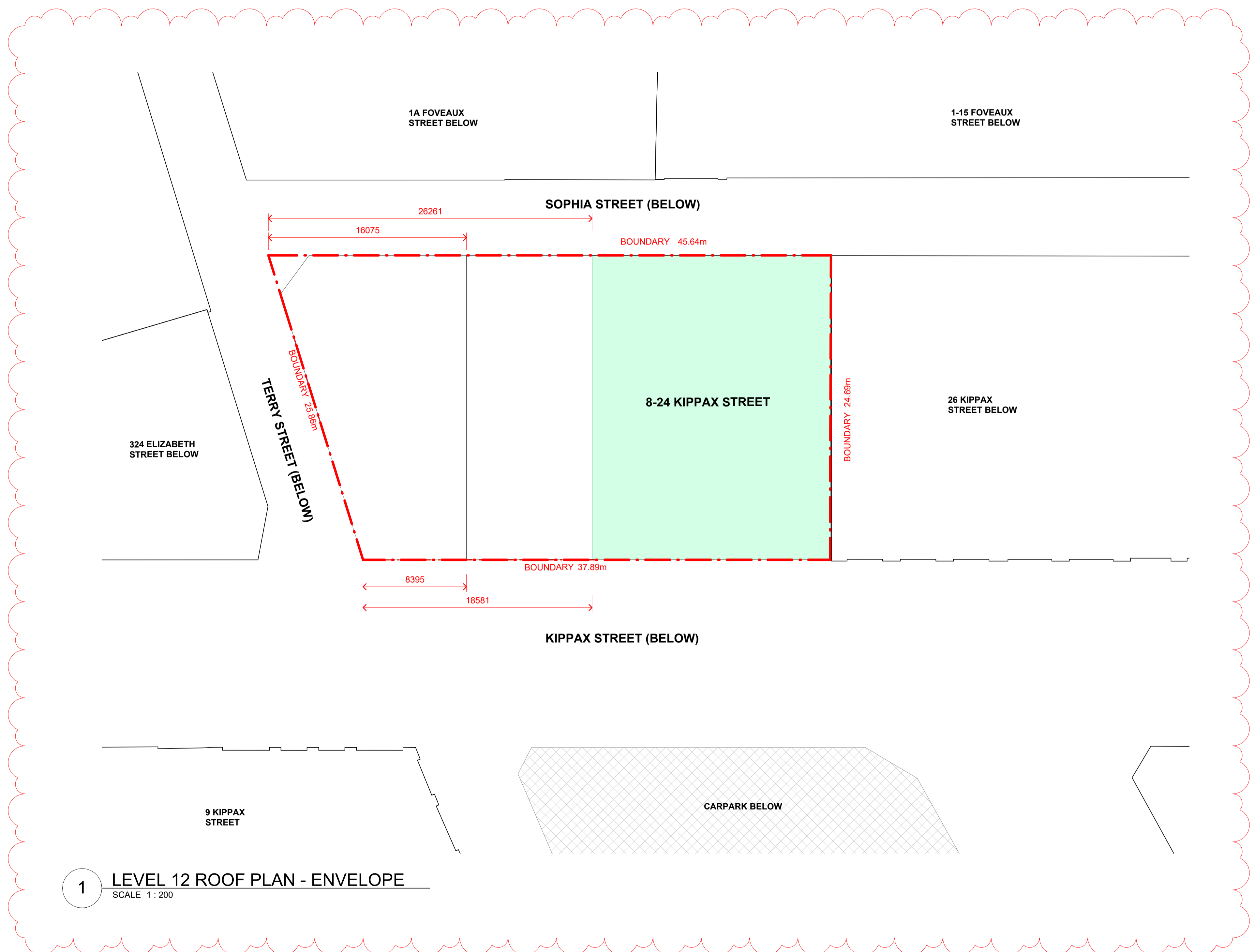
**8-24 KIPPAX STREET, SURRY HILLS**

**Acknowledgement**  
 In the language of the Eora Nation people, this site is known as Gadigal land.

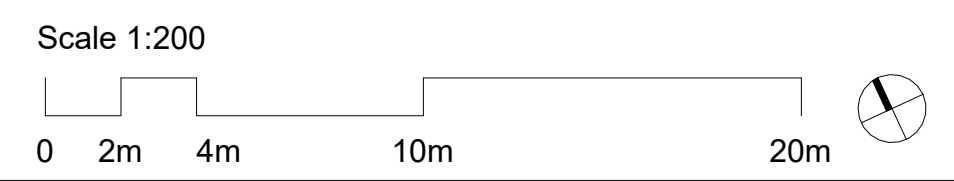
**Drawing Title**  
 ROOF PLAN - ENVELOPE

**Document Control Status:**  
 PLANNING PROPOSAL

<b>Co-ordinated:</b> LV	<b>Drawn:</b> HC
<b>Project Architect:</b> LV	<b>Scale:</b> As indicated @ A1
<b>Project Director:</b> RJ	<b>Date:</b> 04/04/2024
<b>Drawing Number:</b> PP-2107	<b>Revision:</b> 2



**1 LEVEL 12 ROOF PLAN - ENVELOPE**  
 SCALE 1 : 200



Rev	Description	By	Date
1	Issue For PP Submission	LV	06/12/2023
2	Amendments to PP Submission	LV	04/04/2024

**PROJECT MANAGER** GENERATE PROPERTY GROUP  
 Level 13/25 Bligh St, Sydney NSW 2000

**STRUCTURAL ENGINEER** MEINHARDT  
 486 Clarence St, Sydney NSW 2000  
 +61 2 959 999 869

**SERVICES ENGINEER** ADP  
 33 Erskine St, Sydney NSW 2000  
 +61 428 679 459

**TOWN PLANNER** ETHOS URBAN  
 Level 4/100 George St, Sydney NSW 2000  
 +61 410 291 014

**WASTE CONSULTANT** MRA CONSULTING  
 Henry Lawson, Building, 408/19 Roseby St, Drummoyne  
 +61 2 8541 6169

**TRAFFIC CONSULTANT** TTPA  
 10 Help St, Chesham NSW 2067  
 +61 2 9411 5660

**FACADE ENGINEER** SURFACE DESIGN  
 68 York St, Sydney NSW 2000  
 +61 2 9269 1430

**SPECIALIST FIRE ENGINEER / ESD** E-LAB CONSULTING  
 Level 11, 10 Carrington Street, Sydney, NSW, 2000  
 +61 547 343 458

**BCA / DDA CONSULTANT** JENSEN HUGHES  
 Suite 302, Level 3, 151 Castlereagh Street  
 +61 2 9411 5360

**LEGEND**

- CONTEXT BUILDINGS
- 8-24 KIPPAX STREET (EXISTING BUILDING)
- 8-24 KIPPAX STREET (EXTENSION)
- EXISTING PLANT OUTLINE
- HEIGHT LIMIT PLANE
- BOUNDARY LINE

**Cox Architecture**  
 70 George Street  
 The Rocks NSW 2000  
 Australia  
 T + 61 2 9267 9599  
 coxarchitecture.com.au

Nominated Architects:  
 Joe Agius no. 6491  
 Russell Lee no. 6367



**Client** CANVA

**Project No.** 22058.0

**Project** CANVA

**8-24 KIPPAX STREET, SURRY HILLS**

**Acknowledgement**  
 In the language of the Eora Nation people, this site is known as Gadigal land.

**Drawing Title**  
 ENVELOPE ELEVATIONS - SHEET 1

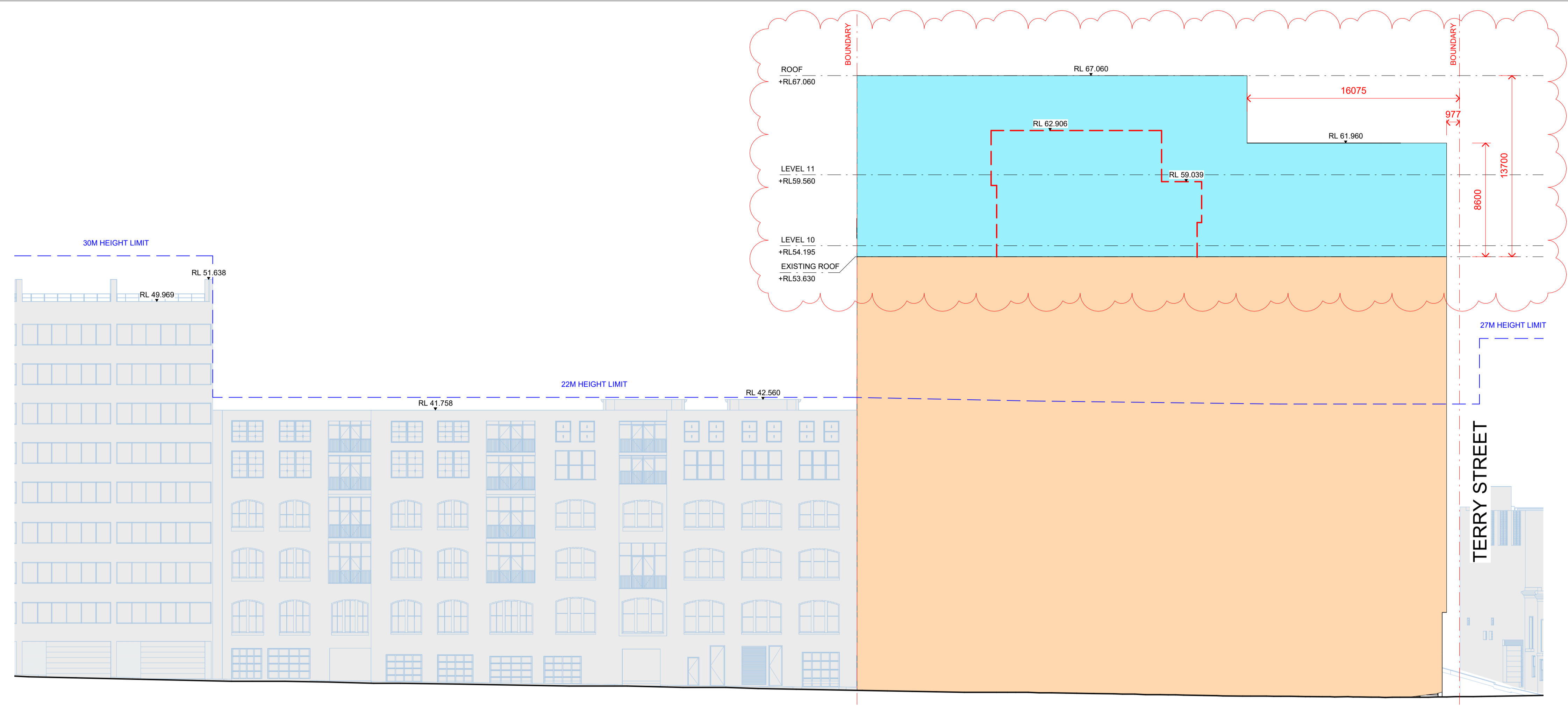
**Document Control Status:**  
 PLANNING PROPOSAL

**Co-ordinated:** LV **Drawn:** HC

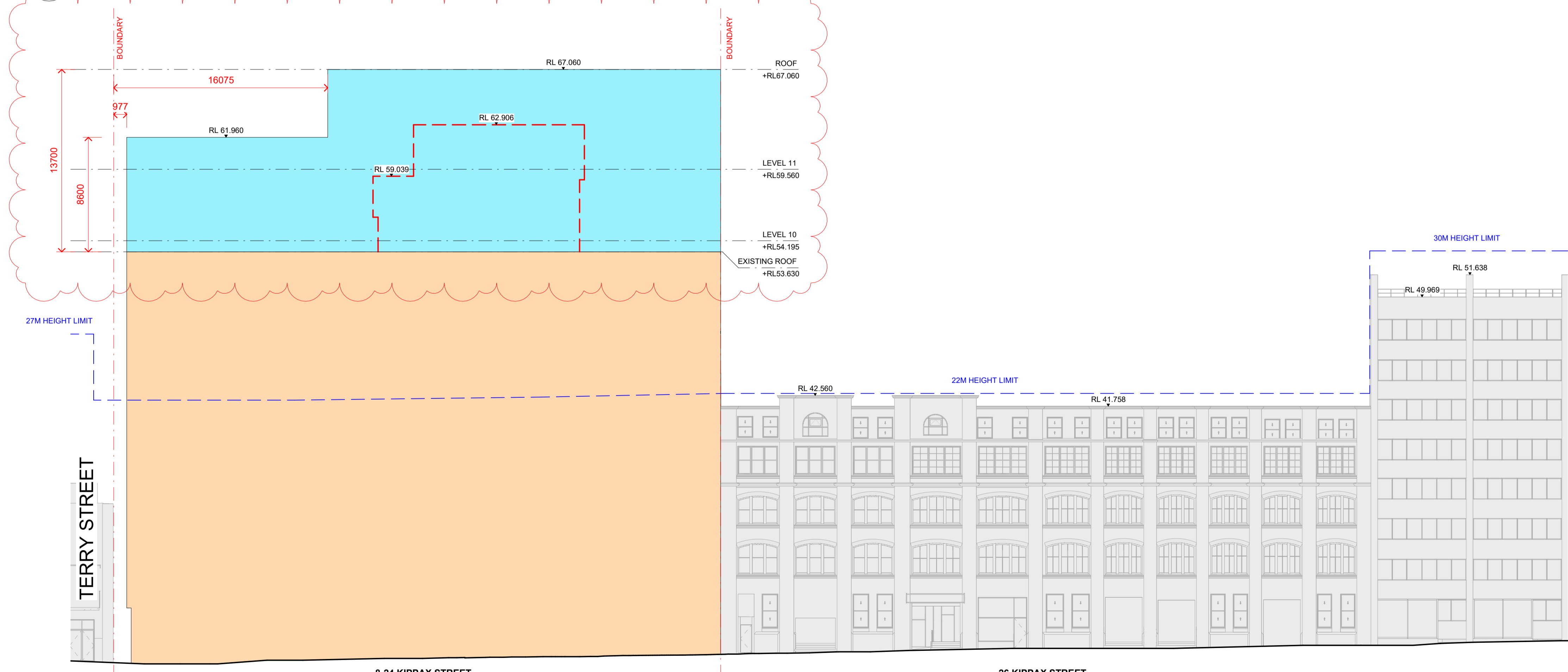
**Project Architect:** LV **Scale:** As indicated @ A1

**Project Director:** RJ **Date:** 04/04/2024

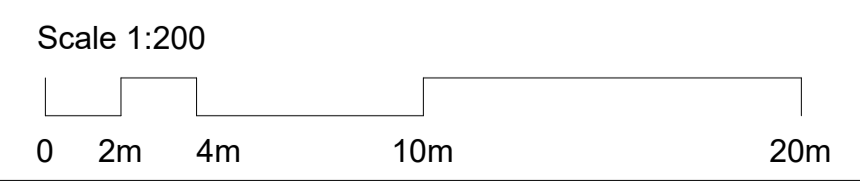
**Drawing Number:** PP-3100 **Revision:** 2



**1 NORTH ELEVATION ENVELOPE - SOPHIA STREET**  
 SCALE 1:200



**2 SOUTH ELEVATION ENVELOPE - KIPPAX STREET**  
 SCALE 1:200



Rev	Description	By	Date
1	Issue For PP Submission	LV	06/12/2023
2	Amendments to PP Submission	LV	04/04/2024

<b>PROJECT MANAGER</b> Level 13/25 Bligh St, Sydney NSW 2000	<b>GENERATE PROPERTY GROUP</b>
<b>STRUCTURAL ENGINEER</b> 486 Clarence St, Sydney NSW 2000 +61 2 959 969	<b>MEINHARDT</b>
<b>SERVICES ENGINEER</b> 33 Erskine St, Sydney NSW 2000 +61 428 679 459	<b>ADP</b>
<b>TOWN PLANNER</b> Level 4/100 George St, Sydney NSW 2000 +61 410 291 014	<b>ETHOS URBAN</b>
<b>WASTE CONSULTANT</b> Henry Lawson, Building, 408/19 Roseby St, Drummoyne +61 2 8541 6169	<b>MRA CONSULTING</b>
<b>TRAFFIC CONSULTANT</b> 10 Help St, Cheshamwood NSW 2067 +61 2 9411 5660	<b>TTPA</b>
<b>FACADE ENGINEER</b> 68 York St, Sydney NSW 2000 +61 2 9269 1430	<b>SURFACE DESIGN</b>
<b>SPECIALIST FIRE ENGINEER / ESD</b> Level 11, 10 Carrington Street, Sydney, NSW, 2000 +61 547 343 458	<b>E-LAB CONSULTING</b>
<b>BCA / DDA CONSULTANT</b> Suite 302, Level 3, 151 Castlereagh Street +61 2 9411 5360	<b>JENSEN HUGHES</b>

**LEGEND**

- CONTEXT BUILDINGS
- 8-24 KIPPAX STREET (EXISTING BUILDING)
- 8-24 KIPPAX STREET (EXTENSION)
- EXISTING PLANT OUTLINE
- HEIGHT LIMIT PLANE
- BOUNDARY LINE

**Cox Architecture**  
70 George Street  
The Rocks NSW 2000  
Australia  
T + 61 2 9267 9599  
coxarchitecture.com.au

Nominated Architects:  
Joe Agius no. 6491  
Russell Lee no. 6367



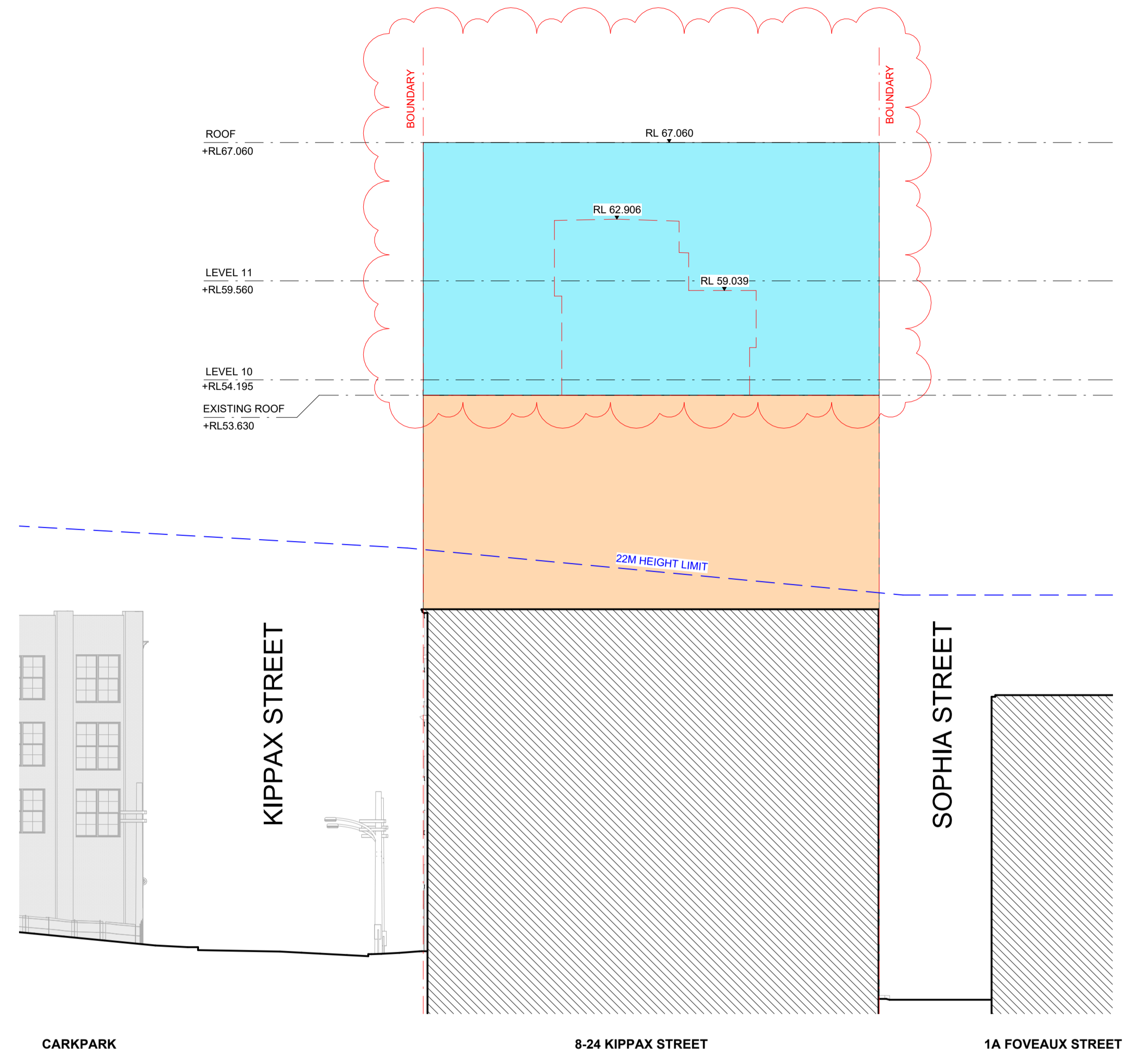
Client: CANVA  
 Project No.: 22058.0  
 Project: CANVA

8-24 KIPPAX STREET, SURRY HILLS  
 Acknowledgement  
 In the language of the Eora Nation people, this site is known as Gadigal land.

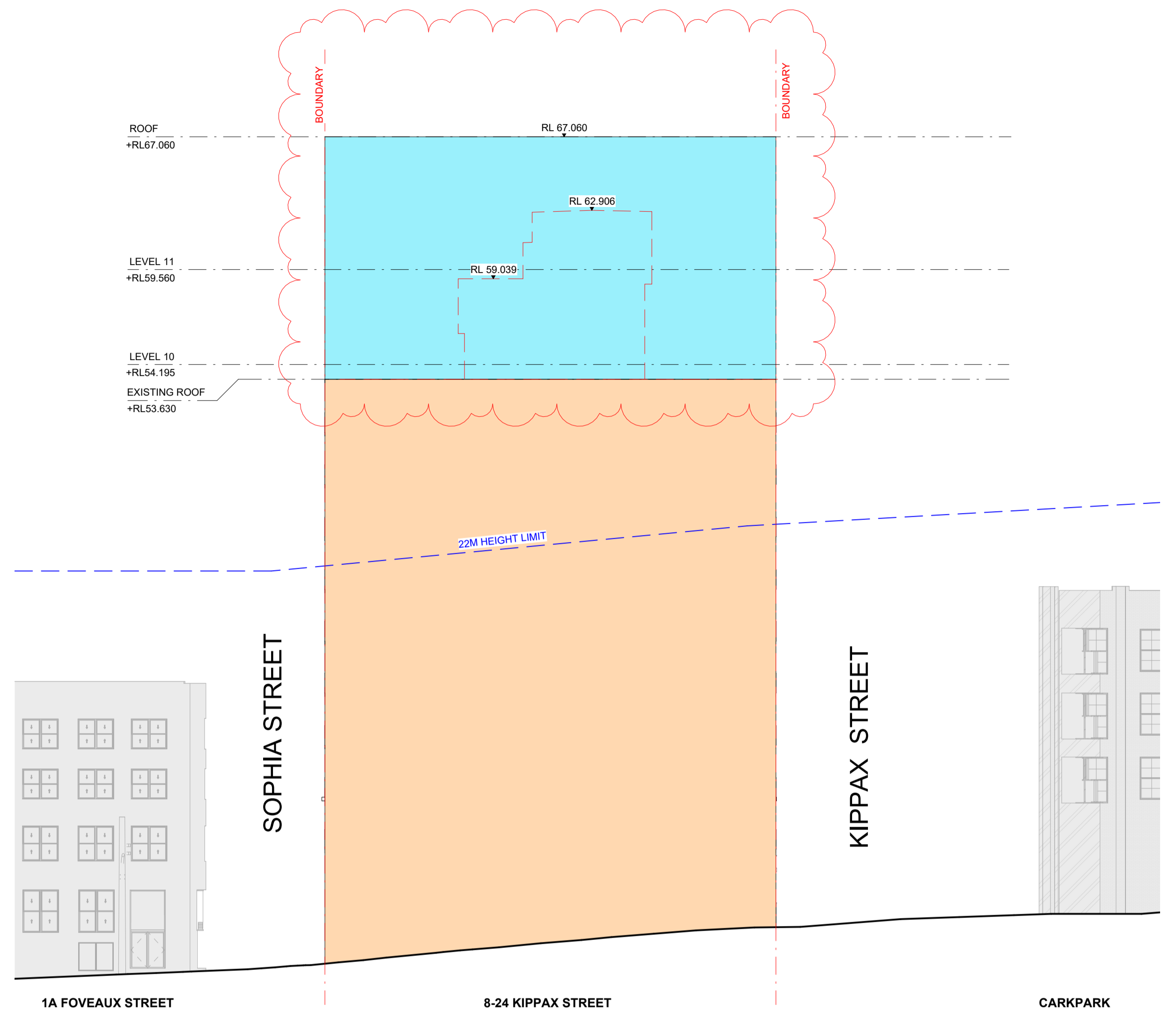
Drawing Title  
**ENVELOPE ELEVATIONS - SHEET 2**

Document Control Status:  
**PLANNING PROPOSAL**

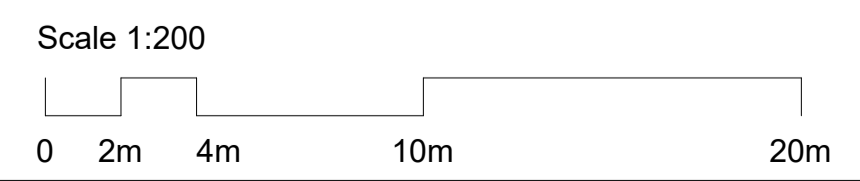
<b>Co-ordinated:</b>	LV	<b>Drawn:</b>	HC
<b>Project Architect:</b>	LV	<b>Scale:</b>	As indicated @ A1
<b>Project Director:</b>	RJ	<b>Date:</b>	04/04/2024
<b>Drawing Number:</b>	PP-3101	<b>Revision:</b>	2



**1 EAST ELEVATION ENVELOPE**  
 SCALE 1:200

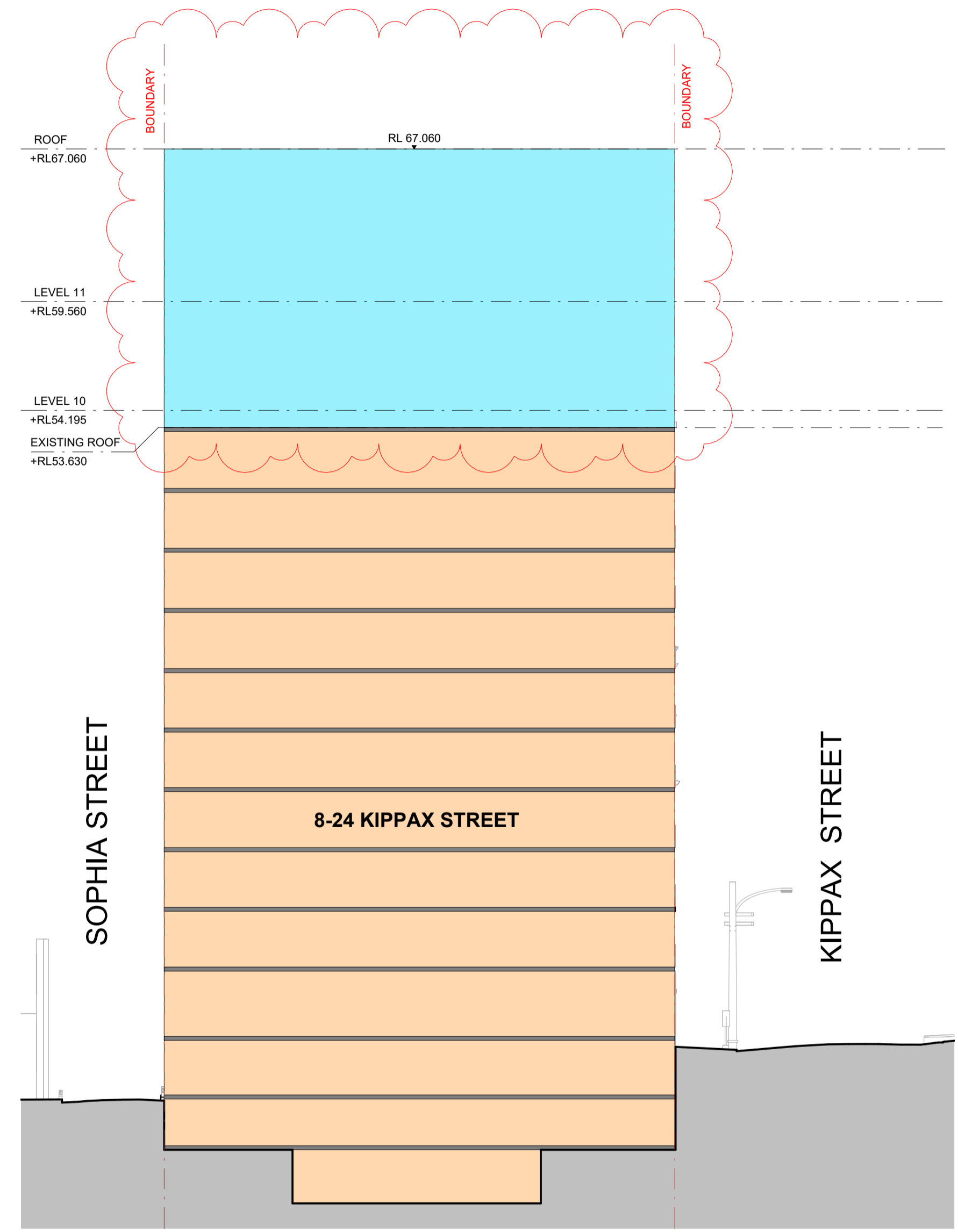


**2 WEST ELEVATION ENVELOPE - TERRY STREET**  
 SCALE 1:200



Rev	Description	By	Date
1	Issue For PP Submission	LV	06/12/2023
2	Amendments to PP Submission	LV	04/04/2024

<b>PROJECT MANAGER</b> Level 13/25 Bligh St, Sydney NSW 2000	<b>GENERATE PROPERTY GROUP</b>
<b>STRUCTURAL ENGINEER</b> 488 Clarence St, Sydney NSW 2000 +61 2 959 869	<b>MEINHARDT</b>
<b>SERVICES ENGINEER</b> 33 Erskine St, Sydney NSW 2000 +61 428 679 459	<b>ADP</b>
<b>TOWN PLANNER</b> Level 4/100 George St, Sydney NSW 2000 +61 410 291 014	<b>ETHOS URBAN</b>
<b>WASTE CONSULTANT</b> Henry Lawson, Building, 408/19 Roseby St, Drummoyne +61 2 8541 6169	<b>MRA CONSULTING</b>
<b>TRAFFIC CONSULTANT</b> 10 Help St, Chesham NSW 2367 +61 2 9411 5660	<b>TTPA</b>
<b>FACADE ENGINEER</b> 68 York St, Sydney NSW 2000 +61 2 9269 1430	<b>SURFACE DESIGN</b>
<b>SPECIALIST FIRE ENGINEER / ESD</b> Level 11, 10 Carrington Street, Sydney, NSW, 2000 +61 447 343 458	<b>E-LAB CONSULTING</b>
<b>BCA / DDA CONSULTANT</b> Suite 302, Level 3, 151 Castlereagh Street +61 2 9411 5360	<b>JENSEN HUGHES</b>

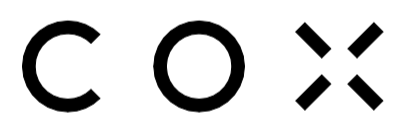


**1 SECTION ENVELOPE**  
SCALE 1 : 200

LEGEND	
	CONTEXT BUILDINGS
	8-24 KIPPAX STREET (EXISTING BUILDING)
	8-24 KIPPAX STREET (EXTENSION)
	EXISTING PLANT OUTLINE
	HEIGHT LIMIT PLANE
	BOUNDARY LINE

**Cox Architecture**  
70 George Street  
The Rocks NSW 2000  
Australia  
T + 61 2 9267 9599  
coxarchitecture.com.au

Nominated Architects:  
Joe Agius no. 6491  
Russell Lee no. 6367



<b>Client</b>	CANVA
<b>Project No.</b>	22058.0
<b>Project</b>	CANVA

**8-24 KIPPAX STREET, SURRY HILLS**

**Acknowledgement**  
In the language of the Eora Nation people, this site is known as Gadigal land.

**Drawing Title**  
ENVELOPE SECTION

**Document Control Status:**  
PLANNING PROPOSAL

<b>Co-ordinated:</b> LV	<b>Drawn:</b> HC
<b>Project Architect:</b> LV	<b>Scale:</b> As indicated @ A1
<b>Project Director:</b> RJ	<b>Date:</b> 04/04/2024
<b>Drawing Number:</b> PP-4100	<b>Revision:</b> 2

